

# DECALOGUE FOR PARTICIPATORY SLUM UPGRADING

Roadmap for Latin America and the Caribbean



## 1. TERRITORIAL GOVERNANCE

Slum upgrading is a long term and multi stakeholder political commitment to guarantee the right to the city of the diverse 'barrios populares' impacting positively the city as a whole.



Right to the City Components



## 2. PUBLIC POLICY

Slum Upgrading should be part of housing and public health policies committed to implement the social and ecological function of property and prevent evictions.



Right to the City Components



## 3. INFRASTRUCTURE PROVISION

Slum upgrading needs to secure universal access to quality essential public utilities, health services, digital connection and social facilities under public/community management.



Right to the City Components



## 4. TERRITORIAL PLANNING

Slum upgrading requires to have a territorial and multi scalar approach, led by inhabitants in a multilevel inter organisational alliance.



Right to the City Components



## 5. POLITICAL RECOGNITION

Slum upgrading must promote human rights protection to achieve a city free of discrimination and committed to avoid the stigmatization of 'barrios populares'.



Right to the City Components



## 6. SOCIAL DIVERSITY

Slum upgrading should focus on care with an intersectional approach that promotes the equitable participation of women, girls, LGBTQIA+, migrants, and racialized population in decisions about the territory.



Right to the City Components



## 7. SOLIDARITY ECONOMY

Slum Upgrading programs that promote a green productive reactivation that supports food sovereignty and the popular, solidarity and care economy.



Right to the City Components



## 8. KNOWLEDGE DIALOGUE

Slum upgrading should be community centred, negotiated, and co-produced based on protected territorial data and local knowledge to coordinate effective interventions.



Right to the City Components



## 9. COLLECTIVE MEMORY

Slum upgrading must strengthen a culture of collective care and human security drawing from inhabitants' collective memory and the psico-social support to community leaders.

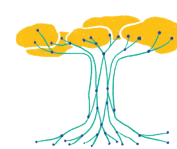


Right to the City Components



## 10. CLIMATE JUSTICE

Slum upgrading needs to work in tandem with climate justice actions, risk reduction efforts and strength resilience from an ecofeminist and intergenerational approach.



Right to the City Components



Coalition